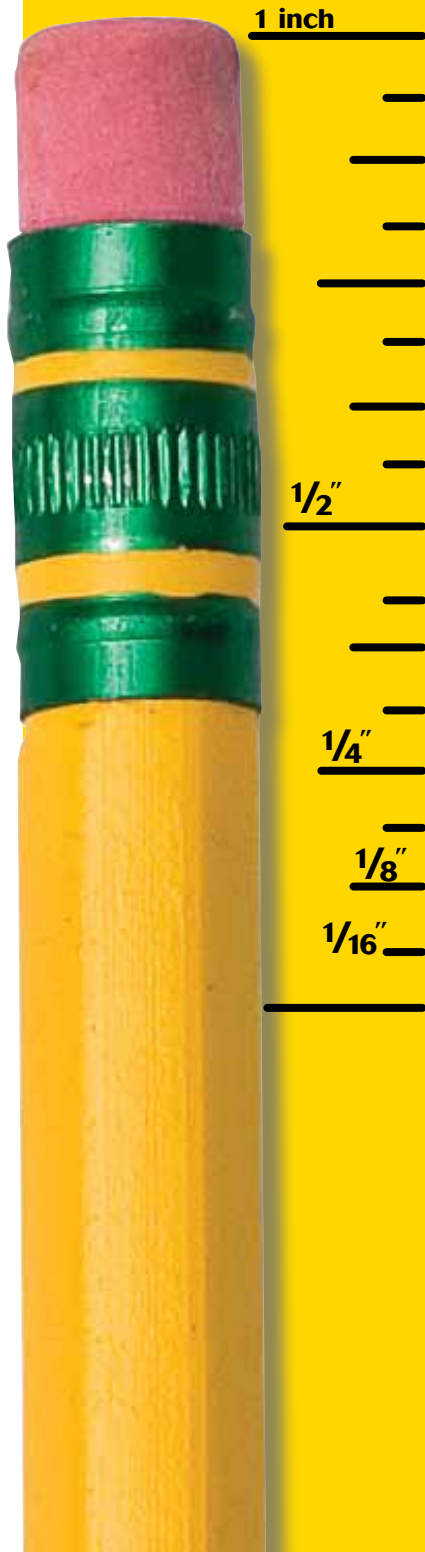


TICK IDENTIFICATION:

Sizing up those (pesky) ticks



1 inch

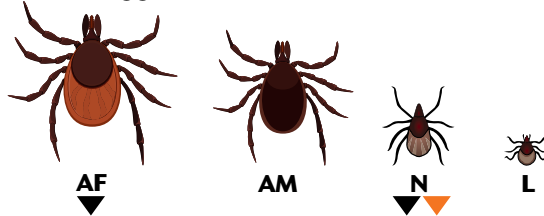
1/2"

1/4"

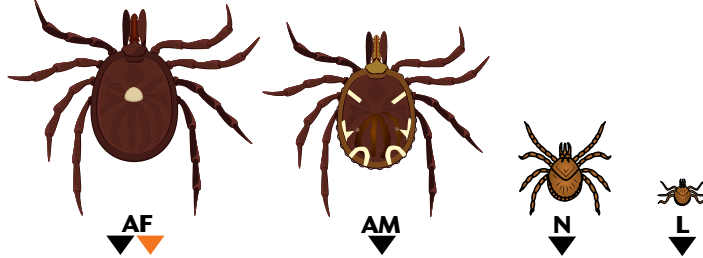
1/8"

1/16"

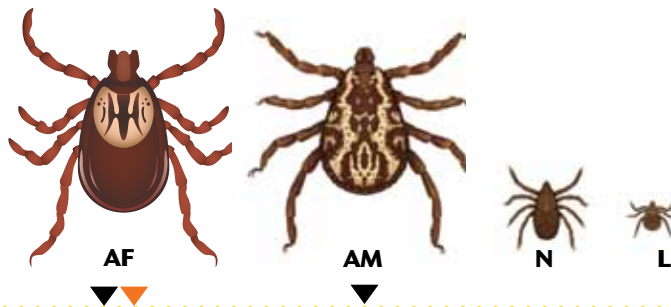
Blacklegged Tick (*Ixodes scapularis*)



Lone Star Tick (*Amblyomma americanum*)



American Dog Tick (*Dermacentor variabilis*)



KEYS

▼ Tick stages known to feed on people.

▾ Tick stage causing most disease transmission.

AF Adult Female
AM Adult Male
N Nymph
L Larva